

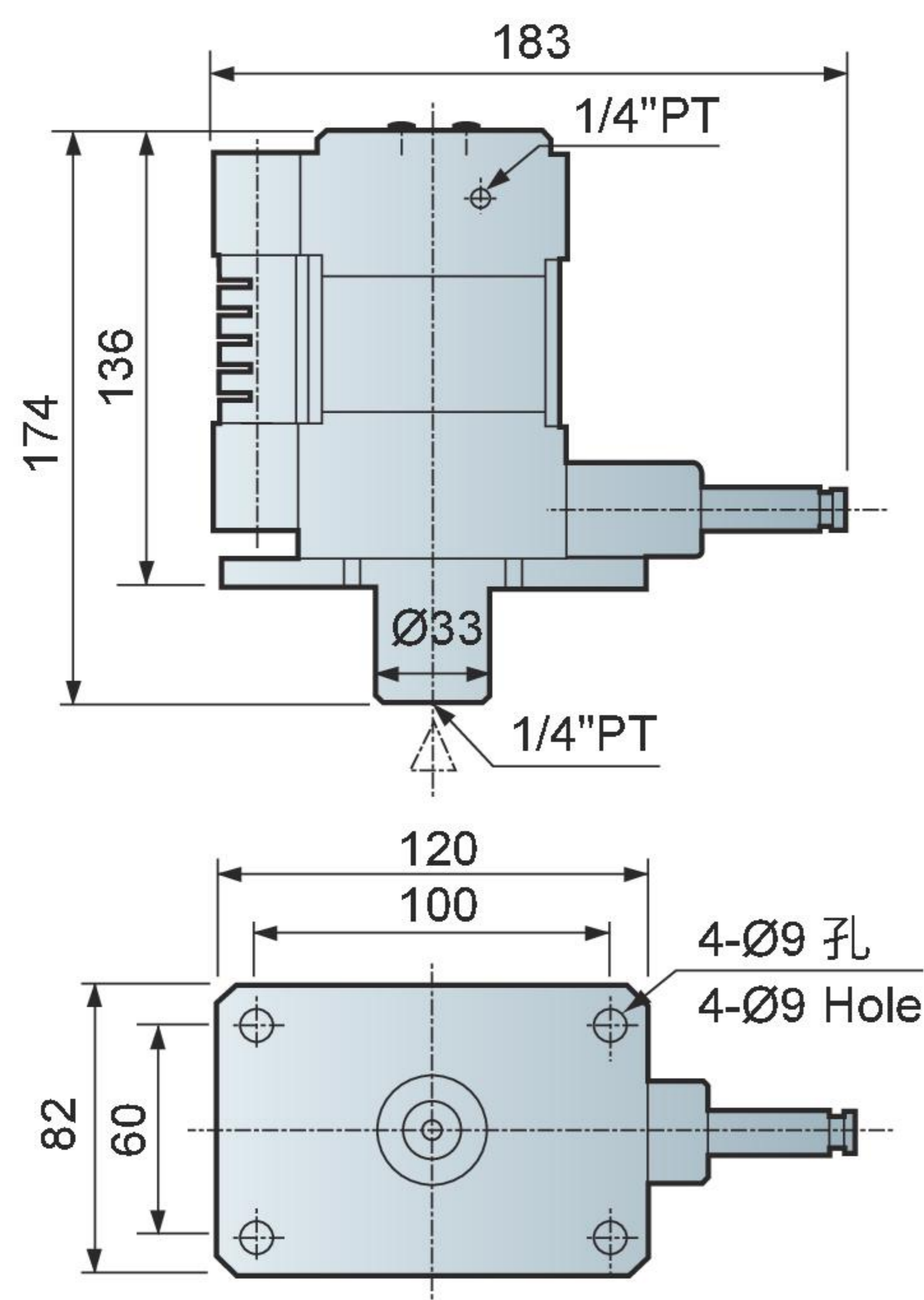
FP63 氣動泵組合 Power Unit



大陸專利號：ZL 2010 2 0528346.6
China Patent No: ZL 2010 2 0528346.6

驅動流體	Drive Fluid	空氣 Air
空氣使用壓力範圍	Air Pressure	2~6 kg/cm ² (2~6 bar)
使用溫度範圍	Operating Temperature	-5~60°C
使用油	Lubricant	一般液壓作動油 (ISO VG32-VG68) Standard hydraulic oil
單一重量	Net Weight/set	4 kg

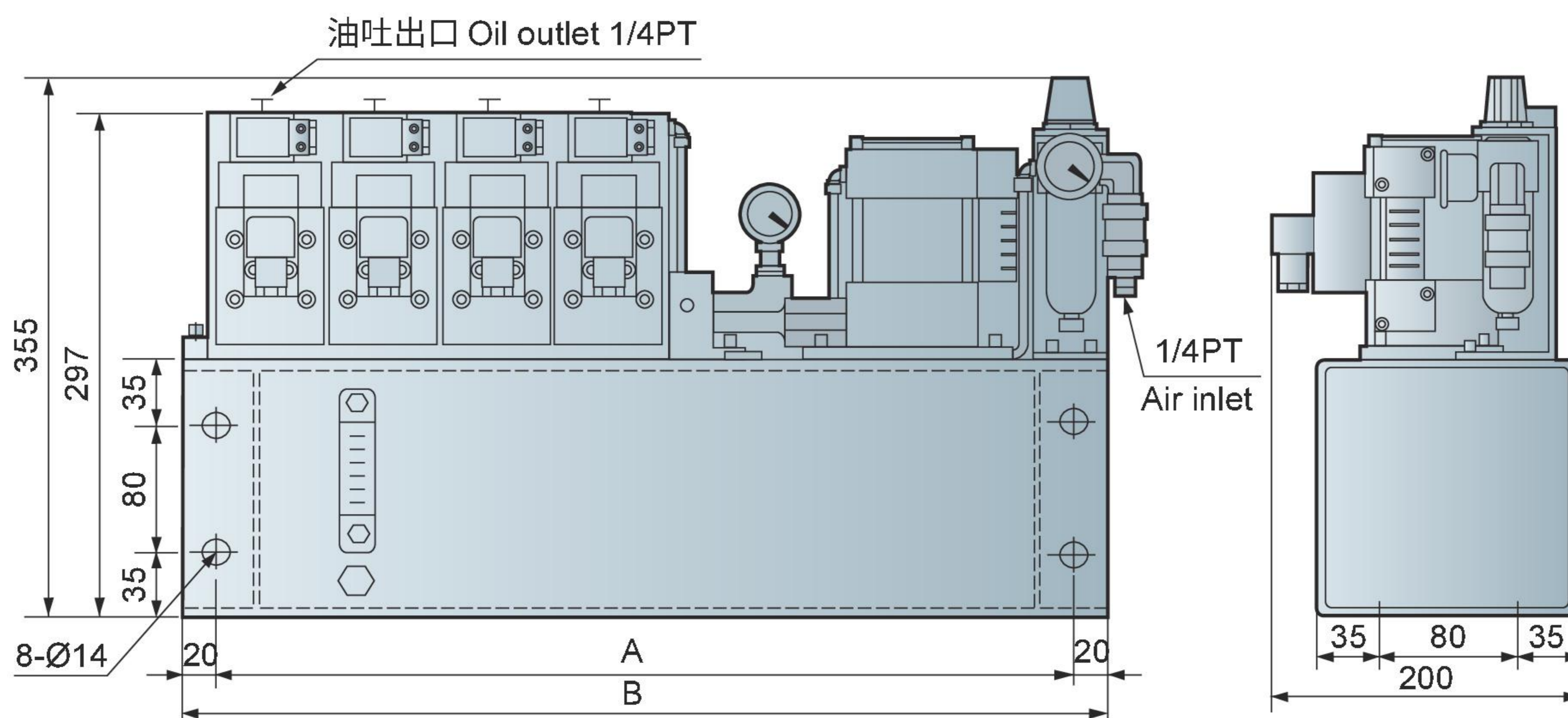
●空氣消耗量為MAX=0.35Nm³/min. Air consumption MAX=0.35Nm³/min.



特性規格 Specifications

FP63	空氣壓力5kg/cm ² 時壓力 At 5kg/cm ² Air Pressure	增壓比 Pressure Ratio	吐出油量 Oil Volume Output
06	420 (kg/cm ²)	1 : 84	0.45 (L/min)
07	300 (kg/cm ²)	1 : 60	0.6 (L/min)
08	250 (kg/cm ²)	1 : 50	0.7 (L/min)
09	200 (kg/cm ²)	1 : 40	0.9 (L/min)
10	150 (kg/cm ²)	1 : 30	1.1 (L/min)
12	100 (kg/cm ²)	1 : 20	1.7 (L/min)
14	80 (kg/cm ²)	1 : 16	2.2 (L/min)
16	50 (kg/cm ²)	1 : 10	2.7 (L/min)
20	40 (kg/cm ²)	1 : 8	4.5 (L/min)
24	26 (kg/cm ²)	1 : 5	6.4 (L/min)

外型尺寸 Dimensions



型號 Model	迴路數 Total Circuits	A	B	油箱全容量 (ℓ) Reservoir Capacity	可用容量 (ℓ) Available Lubricant	重量 Net Weight (kg)	使用油 Lubricant
FP63□□U	1	353	393	6	4.7	23	一般液壓作動油 ISO VG32- VG68 Standard hydraulic oil
FP63□□U	2	353	393	6	4.7	27	
FP63□□U	3	423	463	7.5	5.9	35	
FP63□□U	4	493	533	9	7.1	43	

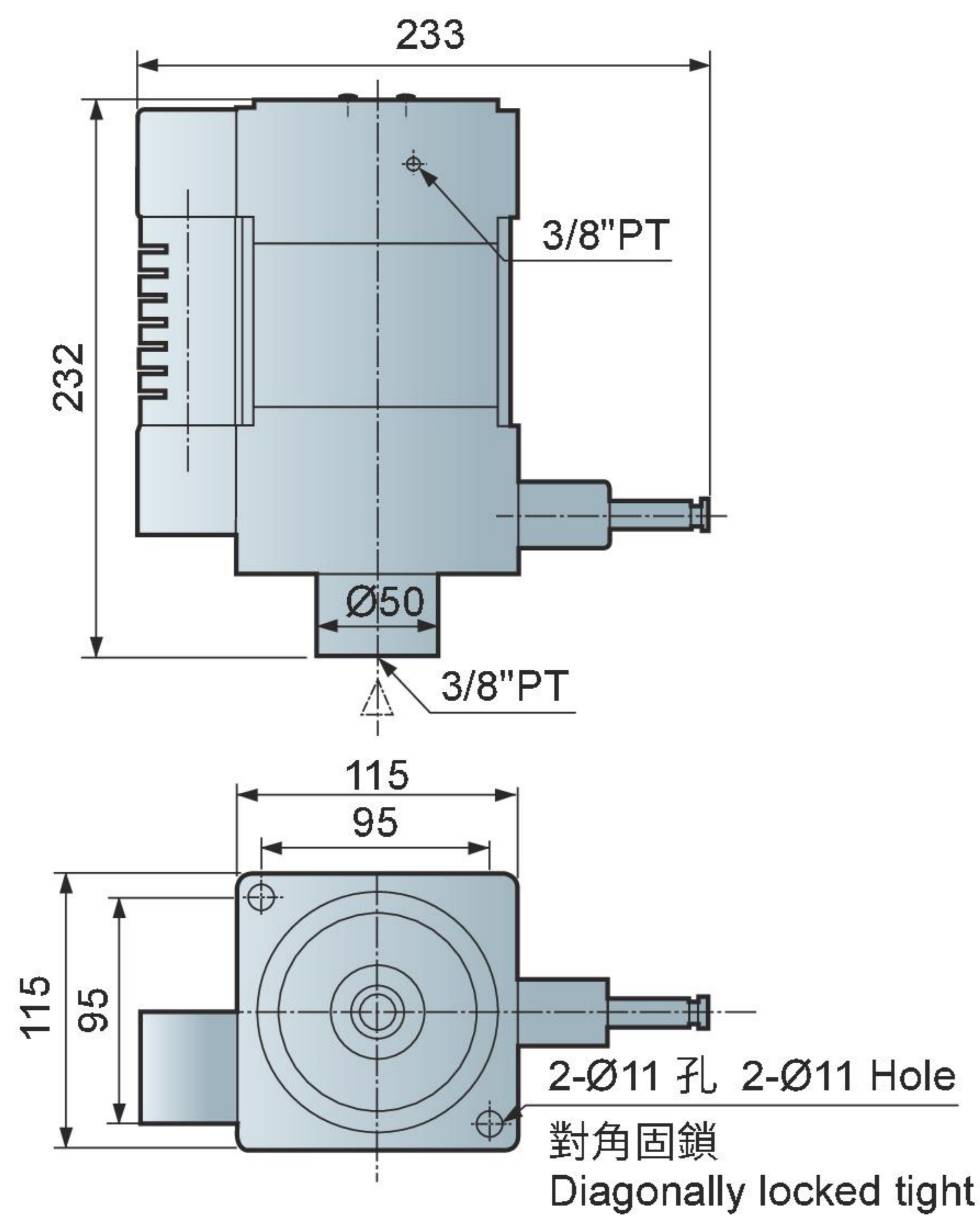
FP100 氣動泵組合 Power Unit



驅動流體	Drive Fluid	空氣 Air
空氣使用壓力範圍	Air Pressure	2~6 kg/cm ² (2~6 bar)
使用溫度範圍	Operating Temperature	-5°~60°C
使用油	Lubricant	一般液壓作動油 (ISO VG32-VG68) Standard hydraulic oil
單一重量	Net Weight/set	11 kg

●空氣消耗量為MAX=0.8Nm³/min. Air consumption MAX=0.8Nm³/min.

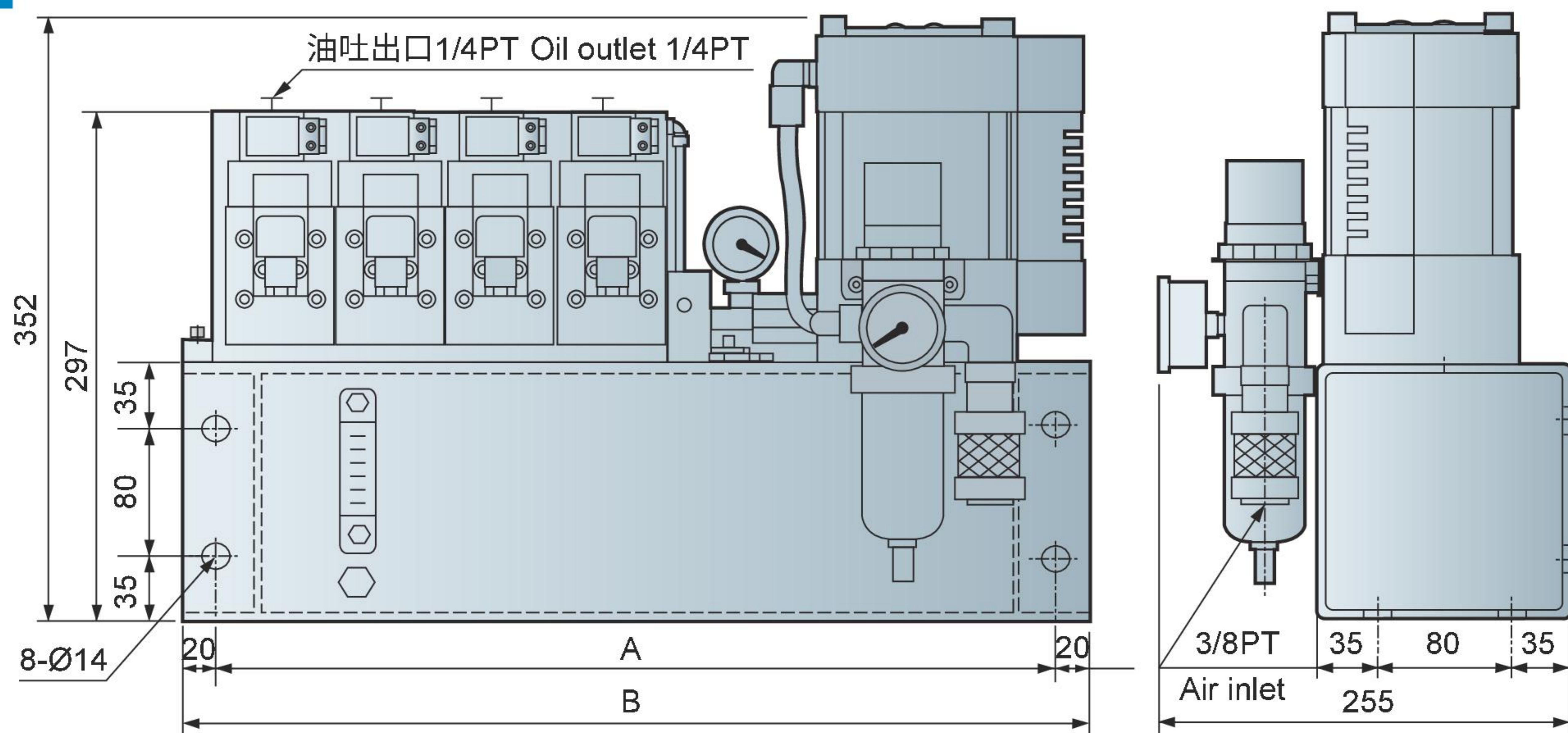
大陸專利號：ZL 2010 2 0528346.6
China Patent No: ZL 2010 2 0528346.6



特性規格 Specifications

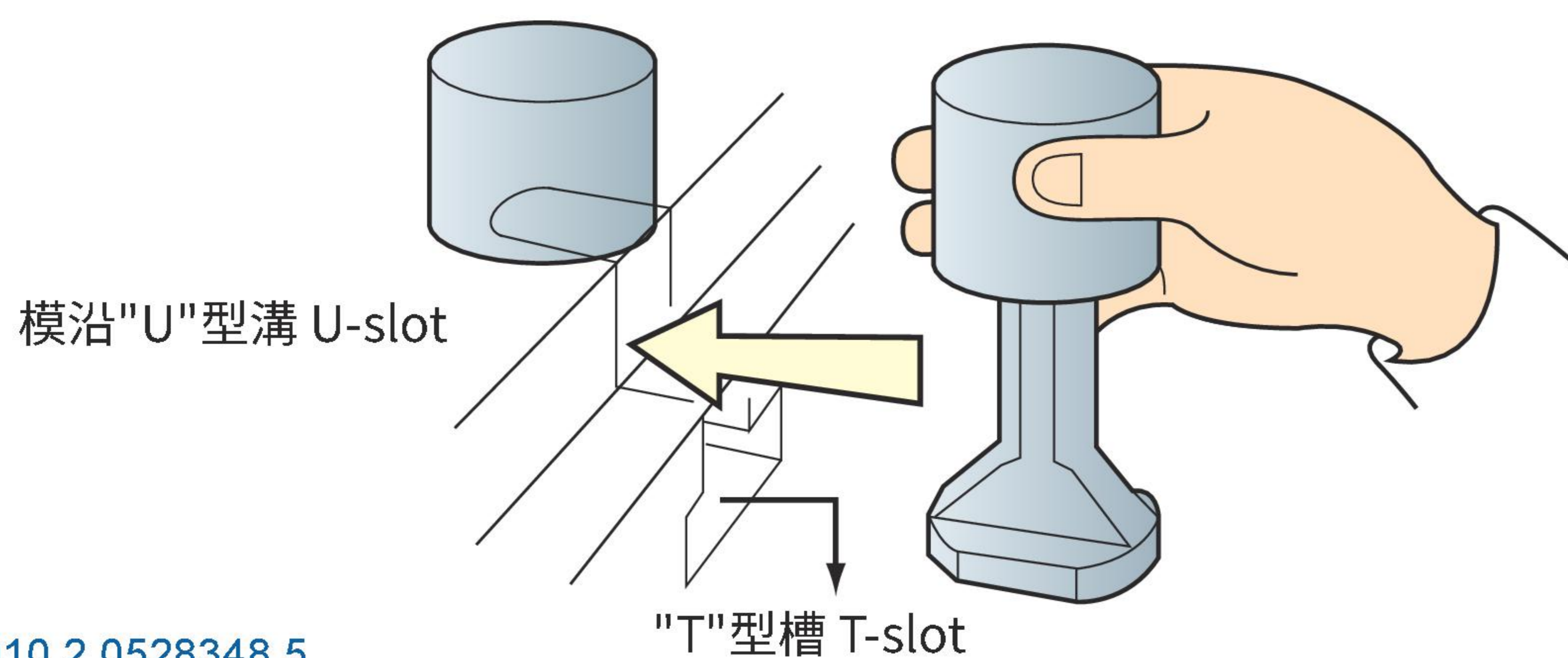
FP100	空氣壓力5kg/cm ² 時壓力 At 5kg/cm ² Air Pressure	增壓比 Pressure Ratio	吐出油量 Oil Volume Output
08	650 (kg/cm ²)	1 : 130	0.9 (L/min)
09	500 (kg/cm ²)	1 : 100	1.15 (L/min)
10	420 (kg/cm ²)	1 : 84	1.4 (L/min)
12	300 (kg/cm ²)	1 : 60	2.04 (L/min)
14	220 (kg/cm ²)	1 : 44	2.4 (L/min)
16	175 (kg/cm ²)	1 : 35	3.2 (L/min)
18	125 (kg/cm ²)	1 : 25	4 (L/min)
20	100 (kg/cm ²)	1 : 20	4.9 (L/min)
24	60 (kg/cm ²)	1 : 12	8.14 (L/min)

外型尺寸 Dimensions



型號 Model	迴路數 Total Circuits	A	B	油箱全容量 (ℓ) Reservoir Capacity	可用容量 (ℓ) Available Lubricant	重量 Net Weight(kg)	使用油 Lubricant
FP10□□U	1	353	393	6	3.8	30	一般液壓作動油 ISO VG32-VG68 Standard hydraulic oil
FP10□□U	2	353	393	6	3.8	34	
FP10□□U	3	423	463	7.5	4.8	42	
FP10□□U	4	493	533	9	5.8	50	

TX 夾模器 Die Clamp



大陸專利號：ZL 2010 2 0528348.5
China Patent No: ZL 2010 2 0528348.5

此型夾模器有節省空間的好處，但模沿須有"U"型溝供其夾持，其底部被製成適合在台盤"T"型槽滑動。

This compact, space saving, piston type clamp requires U-slots on the die shoe. The clamp leg is machined to fit the T-slot on the bolster. The automatic slide model makes remote control possible.

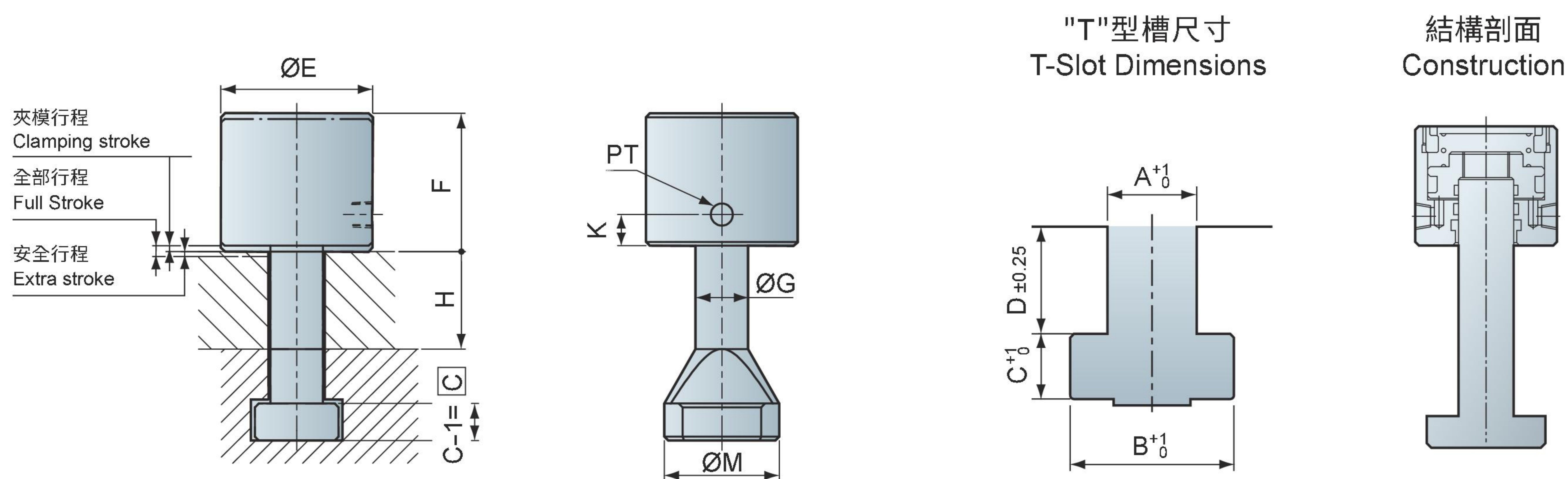
特性規格 Specifications

型號 Model	Unit	TX-1	TX-2	TX-4	TX-6	TX-10	TX-16	TX-25
夾持力 (於油壓250kg/cm ²) Clamping Force (at 250kg/cm ²)	tons	1	2	4	6.3	10	16	25
全部行程 (X) Full Stroke	mm	5	8	8	8	8	8	8
夾模行程 (Y) Clamping Stroke	mm	2.5	4	3	3	3	3	3
安全行程 (Z) Extra Stroke	mm	2.5	4	5	5	5	5	5
夾模器缸體容量 (全行程) Cylinder Capacity at Full Stroke	cc.	2.7	6.5	13	21	32	54	84

●安全行程為全部行程與夾模行程之差值，為特別的安全預留量。

Extra stroke is the difference between full stroke and clamping stroke with extra space allowed for operation safety.

外型尺寸 Dimensions



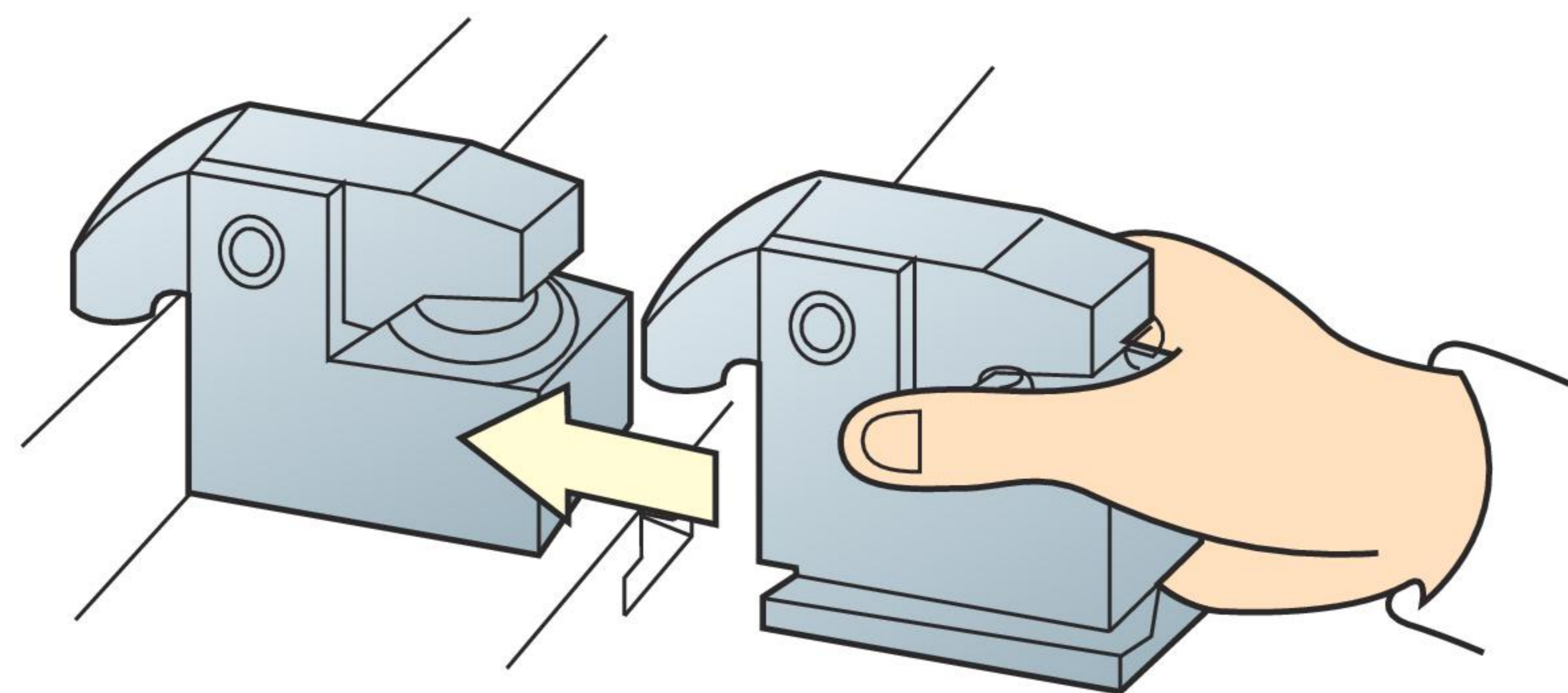
型號 Model	E	F	G	M	K	min. C	PT	A	B	C	D	選用泵浦 Power Unit Models
TX-1	38	38	14	35	11	8	1/8	22	37	16	24	FP6308U-□-□
TX-2	53	52.5	18	38	12	8	1/8	22	37	16	24	
TX-4	68	61.5	23	59	15	10	1/4	22	37	16	24	
TX-6	78	68	27	59	16	14	1/4	28	48	20	28	FP1014U-□-□
TX-10	98	71	38	79	16	17	1/4	28	48	20	28	
TX-16	127	78.5	48	88	16	20	1/4	28	48	23	28	
TX-25	148	100	58	98	15	23	1/4	36	56	25	28	

●模厚建議: 25, 30, 35, 40, 45, 50, 55, 60mm

●模沿厚度(h)及"U"型溝 (A.B.C.D.) 尺寸如為既有 (特殊) 尺寸，請於訂購時確認之。

Before purchasing, please verify if the die edge thickness (h) and T-slot (A.B.C.D.) have standard or special dimensions.

TY 夾模器 Die Clamp



大陸專利號：ZL 2010 2 0529011.6
China Patent No: ZL 2010 2 0529011.6

此型夾模器以槓桿原理作用，夾持模沿，並不需"U"型溝，因此有更寬廣的適用範圍。

Because this lever-type clamp does not require a U-slot on the die shoe it may be used in a wide range of applications. The base of the clamp is machined to fit the T-slot on the bolster. The flange-mount model clamp may be bolted onto the bolster. The automatic slide model makes remote control possible.



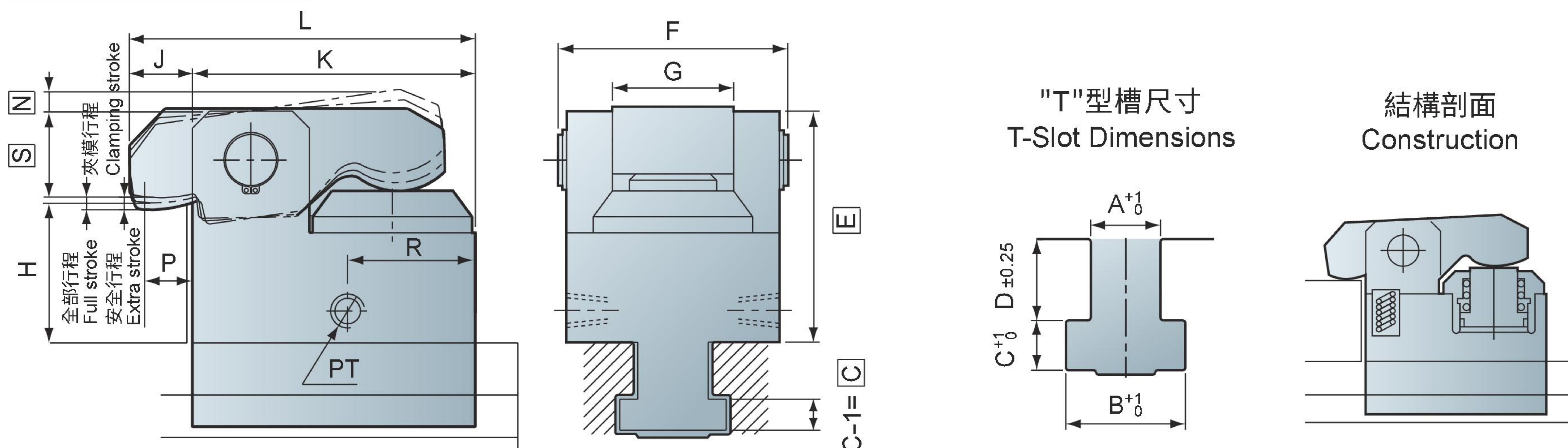
特性規格 Specifications

型號 Model	Unit	TY-1	TY-2	TY-4	TY-6	TY-10	TY-16	TY-25	TY-35
夾持力(於油壓250kg/cm ²) Clamping Force (at 250kg/cm ²)	tons	1	2	4	6.3	10	16	25	35
全部行程(X) Full Stroke	mm	6	7	7	8	8	8	8	8
夾模行程(Y) Clamping Stroke	mm	3	2	3	3	3	3	3	3
安全行程(Z) Extra Stroke	mm	3	5	4	5	5	5	5	5
夾模器缸體容量(全行程) Cylinder Capacity at Full Stroke	cc.	2	6.5	13.2	22.3	37	61	93	133

●安全行程為全部行程與夾模行程之差值，為特別的安全預留量。

Extra stroke is the difference between full stroke and clamping stroke with extra space allowed for operation safety.

外型尺寸 Dimensions



型號 Model	min. E	F	G	J	K	L	max. N	P	R	min. S	PT	min. C	A	B	C	D	選用泵浦 Power Unit
TY-1	49.5	46	20	15	58	73	10	10	34	16.5	1/8	7	22	37	16	24	
TY-2	59	63	28	22	85	107	10	12.5	48	27	1/8	9.5	22	37	16	24	FP6308U-□-□
TY-4	85	87	40	25	120	145	10	16	58	33	1/4	12	22	37	16	24	
TY-6	94	97	44	29.5	133	162.5	11	20	68	40	1/4	14	28	48	20	28	
TY-10	105	110	50	28	165	193	11	20	82	53	1/4	16.5	28	48	20	28	
TY-16	120	130	60	30	200	230	12	20	96	67	1/4	19	28	48	23	28	FP1014U-□-□
TY-25	133	150	73	30	240	270	13	20	110	81	1/4	22	36	56	25	28	
TY-35	143	170	80	30	280	310	15	20	30	90	1/4	25	40	70	30	40	

●模厚建議: 25, 30, 35, 40, 45, 50, 55, 60mm

●模沿厚度(h)及"T"型槽 (A.B.C.D.) 尺寸如為既有 (特殊) 尺寸，請於訂購時確認之。

Before purchasing, please verify if the die edge thickness (h) and T-slot (A.B.C.D.) have standard or special dimensions.

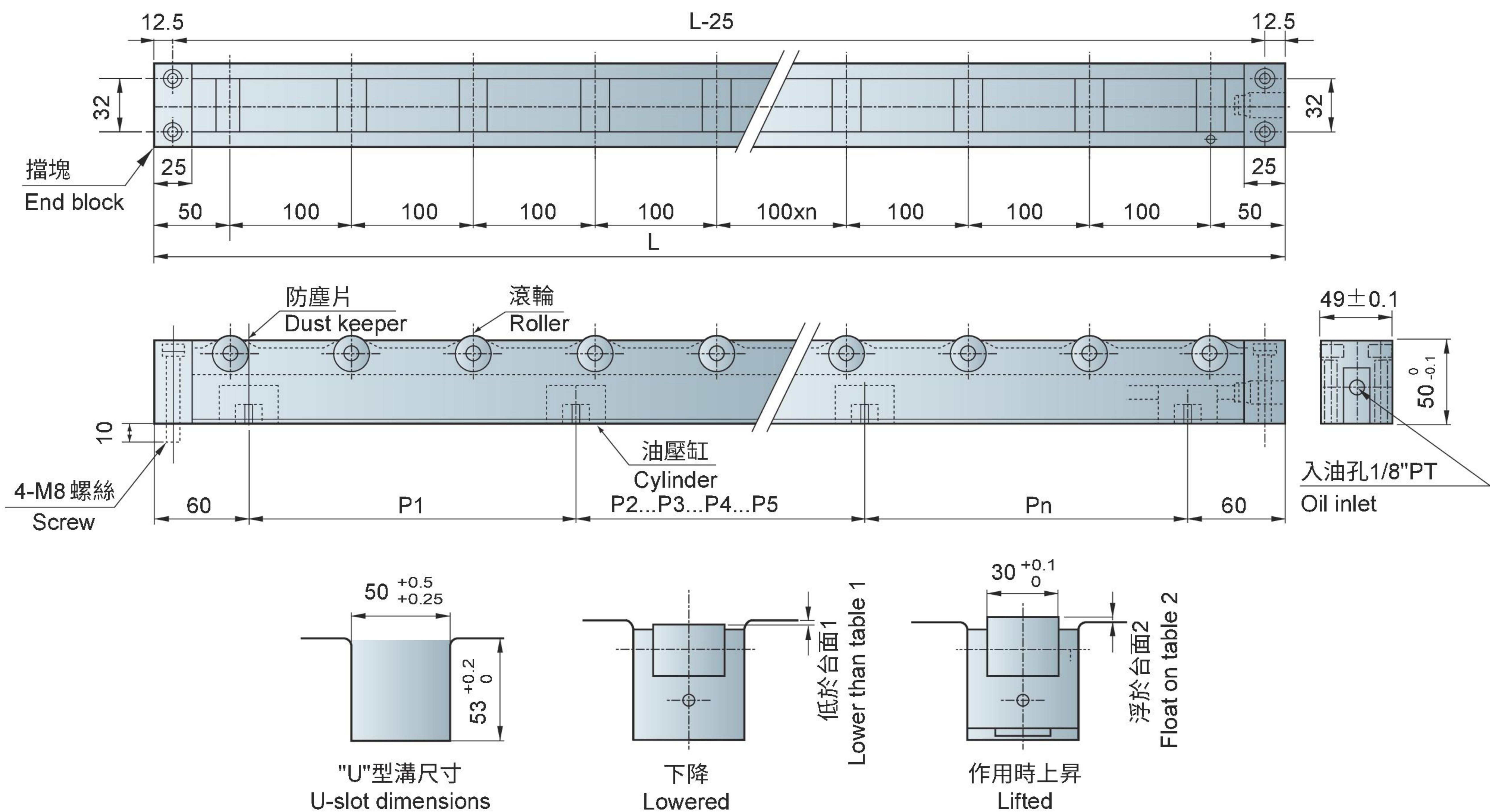
DL-50 油壓式舉模器 (滾輪型) Die Lifter (Roller Type)

DL型油壓式舉模器，以油壓方式舉模，有強力舉模能力，適合模具重量變化差異大時使用。

The hydraulic DL die lifter withstands heavy loads and abuse. The scrap guard / scrapers keep the roller surfaces free from scraps. The rollers are arrayed in closer pitches to prevent damage to the bottom of heavy dies.

The height of the roller can be adjusted by removing some of the built-in shims of different thicknesses.

外型尺寸 Dimensions



特性規格 Specifications

型號 Model	總長度(mm) Overall Length	滾輪數 Roller Q'ty	載模能力(kg) Die Load Capacity	油壓缸(kg) Lift Cylinder		油壓缸距離(mm) Lift Cylinder Pitch							
				丁數 (pcs)	舉模力(kg) Lift Force	P1	P2	P3	P4	P5	P6	P7	
DL-50-400	400	4	800	2	2200	280							
DL-50-500	500	5	1000	3	3300	90	290						
DL-50-600	600	6	1200	4	4400	60	330	90					
DL-50-700	700	7	1400	4	4400	100	340	140					
DL-50-800	800	8	1600	4	4400	120	390	170					
DL-50-900	900	9	1800	4	4400	170	400	210					
DL-50-1000	1000	10	2000	5	5500	125	125	410	220				
DL-50-1100	1100	11	2200	5	5500	150	150	400	280				
DL-50-1200	1200	23	4600	5	5500	150	150	400	380				
DL-50-1300	1300	25	5000	6	6600	150	150	200	400	280			
DL-50-1400	1400	27	5400	6	6600	150	150	200	400	380			
DL-50-1500	1500	29	5800	7	7700	150	150	200	300	300	280		
DL-50-1600	1600	31	6200	7	7700	100	150	250	400	300	280		
DL-50-1700	1700	33	6600	8	8800	100	100	150	250	300	300	380	
DL-50-1800	1800	35	7000	8	8800	100	100	150	250	300	300	480	

● 訂購時，如有下料孔請附台盤圖。

Before purchasing, please attach a bolster plate diagram for correct sizing of the waste material hole at the bottom.