

Specification **Woodworking Machine Control System** oYes --No ΔOption

Product SPEC.

Model No.	Hardwood/Cutting Machine MW								Tongue and Groove Machine MWT		Six-side Electronic Saw MWD		Six-side Drilling MWC	
	2200A	2500D	2600A	2600D	3300TP	5800A	5800D	STEP	2200A	2560D	2600D	2660D		
Display	--	--	--	--	7" Touch	8.4"	8.4"	--	--	--	--	--	--	--
Video Output	VGA	VGA	VGA	VGA	build-in 7" LCD	build-in 8.4" LCD	build-in 8.4" LCD	VGA	VGA	VGA	VGA	VGA	VGA	VGA
Axis	3	N+2	4	N+2	4/N+2	4/6	N+2	4	3	N+2	N+2	N+2	N+2	N+2
Servo Protocol	--	EtherCAT	--	EtherCAT	EtherCAT	--	MII / RTEX / EtherCAT	--	--	EtherCAT	EtherCAT	EtherCAT	EtherCAT	EtherCAT
D/A Output	2	2	2	2	2	2	2	--	2	2	2	2	2	2
MPG	1	1	1	1	1	1	1	1	1	1	1	1	1	1
Fast I	2	2	2	2	2	2	2	--	2	2	2	2	2	2
Input Point	Serial Communication I/O. Expandable with LNC serial communication I/O cards, max: 256 input points/ 256 output points.													
Output Point														
Front USB	--	--	--	--	1	1	1	--	--	--	--	--	--	--
Rear USB	--	--	--	--	1	1	1	--	--	--	--	--	--	--
LED Tool Indicator	--	--	--	--	1	1	1	--	--	--	--	--	--	--
Control Path	1	1	1	1/2/3/4	1/2	1	1	1	1	1/2	1	1	1/2/3/4	1/2/3/4
HW Axis	3	6	4	4/12/16/22	4/12	6	6	4	3	7/12	2/3/4/5	7/12/16/22	7/12/16/22	7/12/16/22
Spindle	2	2	2	2	2	2	2	--	2	2	2	2	2	2
Front-backend Control	--	o	--	o	--/o	--	--	--	--	o	o	o	o	o
ReCON	o	o	o	o	o	o	o	o	o	o	o	o	o	o

SPEC.(Peripherals)

Model No.	REL2840	REL7816D	SIOA1760R	SIOA1700	SIO1880PD3	REL1805	ECATIO-2432P
I/O Type	User I/O	User I/O	Comm. I/O (CIO)	Comm. I/O (CIO)	Comm. I/O (CIO)	Expansion	Comm. I/O (EIO)
Support Controller	Pulse	Pulse	Pulse	Pulse	Digital	--	Digital
Input	16	20	16	22	24	--	24
Output	16	16	16	16	32	5	32
Input Spec.	DC 24V±10%	DC 24V±10%	DC 24V±10%	DC 24V±10%	DC 24V±10%	--	DC 24V±10%
Output Spec.	AC 250V / 6A DC 24V / 3A	DC 24V / 2A	AC 250V / 6A DC 24V / 3A	DC 24V / 2A	DC 24V / 2A	AC 250V / 5A DC 24V / 1.5A	DC 24V / 2A
Output Type	Relay	Crystal/ Low level output	Relay	Crystal/ Low level output	High level output	Relay	Crystal/ High level output

Model Naming Rule

MW	2200	D3	S1	V04	P02
Moodworking Machine Control System	Main Modle No.	Servo Type	Channel	Axis	Spindle
MW Hardwood/Cutting Machine	2200 25_0 26_0 STEP	D1 MII	S1 Single	V03 3-axis	P01 Max.1
MWT Tongue and Groove Machine	External Display(1366*768) STD/ Customization UI	D3 EtherCAT	S2 Dual	V04 4-axis	P02 Max.2
MWD Six-side Drilling	3300 w/7" Touch Panel Standard UI	D7 MIII		V06 6-axis	
MWC Electronic Saw	5800 w/8.4" Touch Panel Standard UI	A Pulse			

Intelligent Machines Information & Intelligence

Comprehensive Upgrade of Smart Machinery

Besides of the hard core technology of precision and processing speed, the developing trend of the modern machinery is to integrate smart functions to upgrade machine to intelligent machinery. The key technologies include integration of sensors, intelligent accessories and IoT. LNC Technology provides powerful product integration control capabilities to bring modern smart machinery and more efficient manufacturing process come true.



LNC Technology Co., Ltd.

Service & Support : +886-0800-561888 ; service@LNC.com.tw



More Information

LNC Technology CO.,Ltd

40764 6F., No.633, Sec. 2, Taiwan Blvd., Xitun Dist., Taichung City 407, Taiwan
Tel: +886-4-23106859
Fax: +886-4-23105936

LNC DONG GUAN CO.,LTD.

Building 3, LINK International Business Park, No.96 Kechuang Road, Nancheng District, Dongguan, Guangdong, China 523000.
Tel: +86-769-88786162 | +86-769-81309173
Fax: +86-769-88781100

All rights reserved, including intellectual property rights. Technical data is subject to modification and delivery subject to availability. Any liability that the data and illustrations are complete, actual or correct is excluded. Designations may be trademarks and/or copyrights of the respective manufacturer, the use of which by third parties for their own purposes may infringe the rights of such owner. ©2021 LNC



LNC Technology Co., Ltd
Controller Business Group

SENSOR



WOODWORKING MACHINE

LNC SCADA

Woodworking Machine Controller Series

High Speed High Precision | Scalable Performance
System Back-up by one Click | Auto Program Scheduling

www.LNC.com.tw

Service@LNC.com.tw

LNC Woodworking Machine Control System Series



- Easy Maintenance**
 - Support back-up by one click and recovery
 - Set up I/O position by users
- Various Servo Protocol**
 - Support multiple servo types include pulse signal and digital type: MII/MIII, RTEXT and EtherCAT
- Customization Service**
 - Providing customization service and developing tools: PLC, Macro and HMI (Qui-designer)
- Intelligence**
 - Automatic loading and unloading collocation scheduling
 - External device connection

Product Series Woodworking Machine Controller Series



- MW2200A**
- Support KB/MS
 - STD 3 axes
 - 1 set of DA
 - Application: cutting machine, side-drilling machine



- MW2500D**
- Support KB/MS
 - Single path, Multi-axis
 - 2 sets of DA
 - Application: six-side drilling machine labeling machine, banding machine



- MW2600A**
- Support KB/MS
 - STD 4 Axes
 - 2 sets of DA
 - Application: cutting machine (Including tool magazine)



- MW2600D**
- Support KB/MS
 - Dual path, Multi-axis
 - 2 sets of DA
 - Support system labeling function
 - Application: six-side drilling machine, cutting machine, labeling machine



- MW3300TP**
- 7" touch panel
 - STD 4 axes
 - Single path, Multi-axis
 - Application: cutting machine (single/Duo tool magazines)



- MW5800**
- 8.4" display
 - STD 4/6 axes
 - Single path, Multi-axis
 - STD OP/MDI
 - Application: cutting machine (single/Duo tool magazines)



- MWT5800**
- 8.4" display
 - STD MDI
 - Single path, Multi-axis
 - Application: Tongue and groove machine



- MW STEP**
- Low-profile, compact design
 - Support KB/MS
 - STD 4 axes
 - Application: desktop-milling machine

Features Features

LNC woodworking machine controller series has powerful path and motion control and multiple electromechanical parameter setting functions. By providing users development tools, which can effectively improve the development process, shorten the development and delivery time of customized functions.

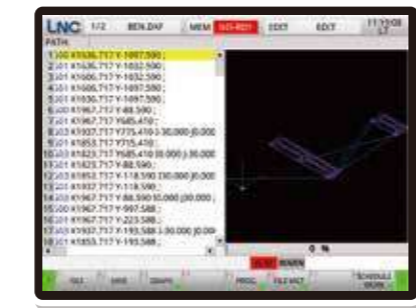
- Multi-Axis Motion Control**
 - Look ahead (motion continuity)
 - Acceleration and deceleration control
 - Arc and corner speed control
 - Speed control tolerance
- Single Axis Motion Control**
 - Several methods of back to origin
 - Jog function
 - Positioning function
- Electric Parameters Settings**
 - Gear ratio
 - Various formats of commands
 - I/O converter table
 - Axis control converter table
- Path Control**
 - Dynamic speed control
 - MPG dry run
 - On-position check

Software Software

- Spindle**
 - Support 1/2/3/4 spindles
- Tool Magazine**
 - Row Knives
 - Single/Dual Carousel Tool Magazine (Servo/machinery)
 - Row Drills (Vertical/Horizontal)
 - Saw blades
- Value-added Functions**
 - Positioning
 - Vacuum adsorption
 - Vacuum break
 - Regular track lubrication
 - Single and double station switching
 - Dust removal function (double station)
 - Load/Unload (Single station)
- Integration Capability**
 - LNC SCADA Cloud platform
 - Smart Sensor
 - Robot Cell
 - AI Cell

Quick Preview of Appearance

- Preview and confirm before program processing to avoid errors



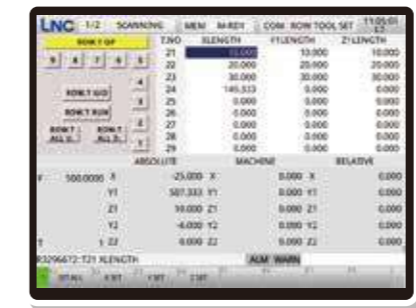
Automatic Tool Length Measurement

- Input information of tool length via UI for easy operation



Friendly UI for Adjustment of Tool Magazine

- Provide ededicate tool magazine adjustment page for common tool magazines



Automatic Scheduling

- Processing program scheduling in advance to improve the level of automation



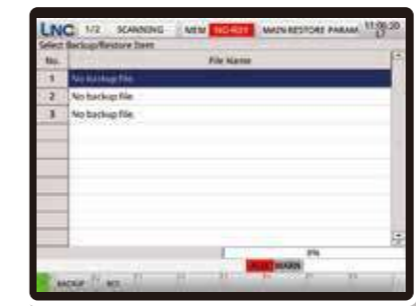
Encryption of Macro

- Support encryption of Macro program, the encrypted ones cannot be interpreted



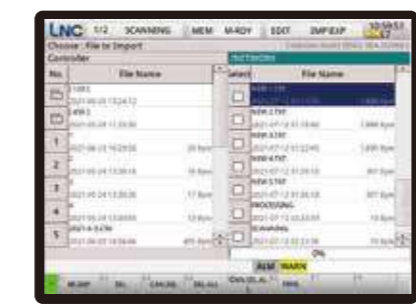
Back-up by One-click

- Provide convenient back-up and recovery function and is able to quickly restore the system as the state before misoperation



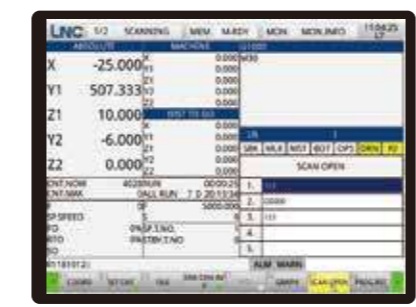
Easy document Import

- Import document or processing document via internet



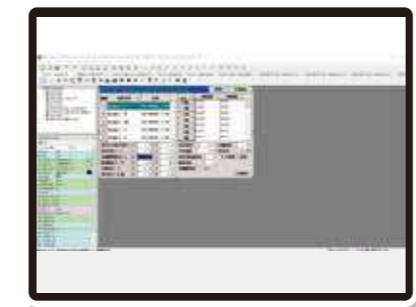
Open Files by Scanning

- Open files by using scanner
- USB port for scanner connection



Open UI Editing

- Providing QUI designer for UI editing to customize unique UI to fit requirements of applications



User Interface Standard VS Customization

Standard User Interface

- Standard page with complete functions and smooth operation; satisfy most of user requirements



Customized User Interface

- According to customer habits, corporate style or application requirements, the UI could be customized to meet the corporate image or operational needs

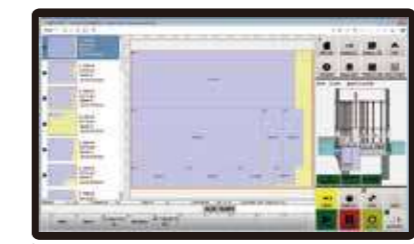


Label Printing Label Printing



Using the APP provided by LNC can to connect and control the printer to complete the automatic labeling function. Zebra ZT410 model is currently supported, and more models will be added in the future.

Application Applications



Cutting Machine

- Standard User Interface
- 0-second tool change
- Loading, unloading, and pushing materials function



Banding Machine

- Support straight/ bevel edge banding
- Edge banding speed up to 26 m/min
- Support multi-band switching



Six-side Drilling Machine

- Complete six-sided drilling and slotting on both sides in one process
- High-speed long-distance double gripper structure
- Milling Type



Side-drilling Machine

- Support NC programming
- Built-in fixed-point punching and fixed-point milling function
- High repetitive scanning accuracy



Tongue and Groove Machine

- Tool Programming; automatically generate processing programs by matching points
- Double station: two stations can execute different programs independently
- Various types of tongue, groove and stripe processing



Hardwood Processing

- Support basic CAD drawing
- Support DXF import
- Support special-shaped processing